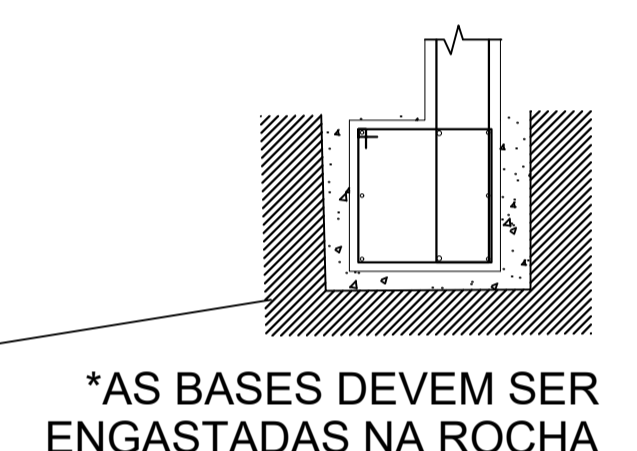
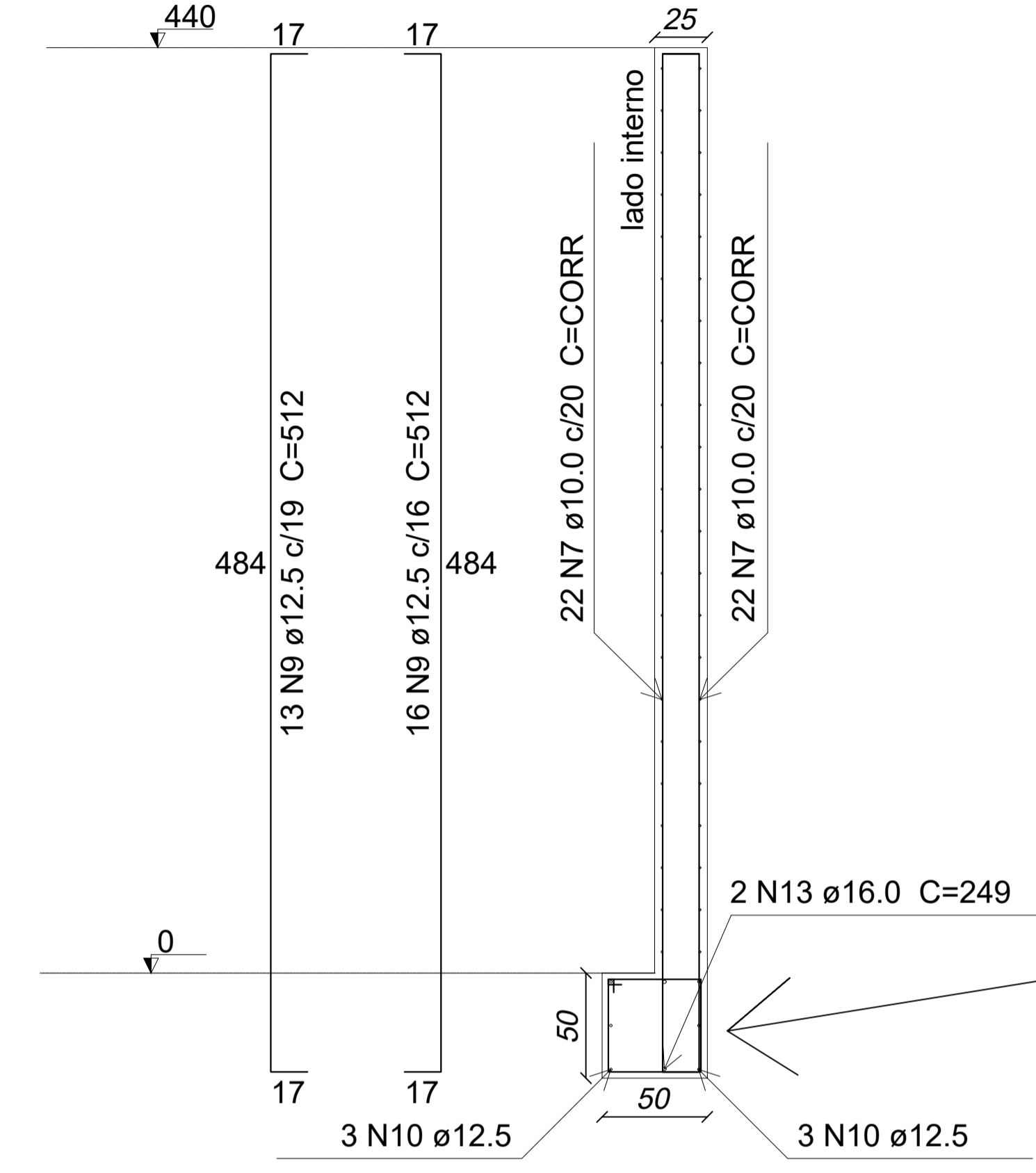
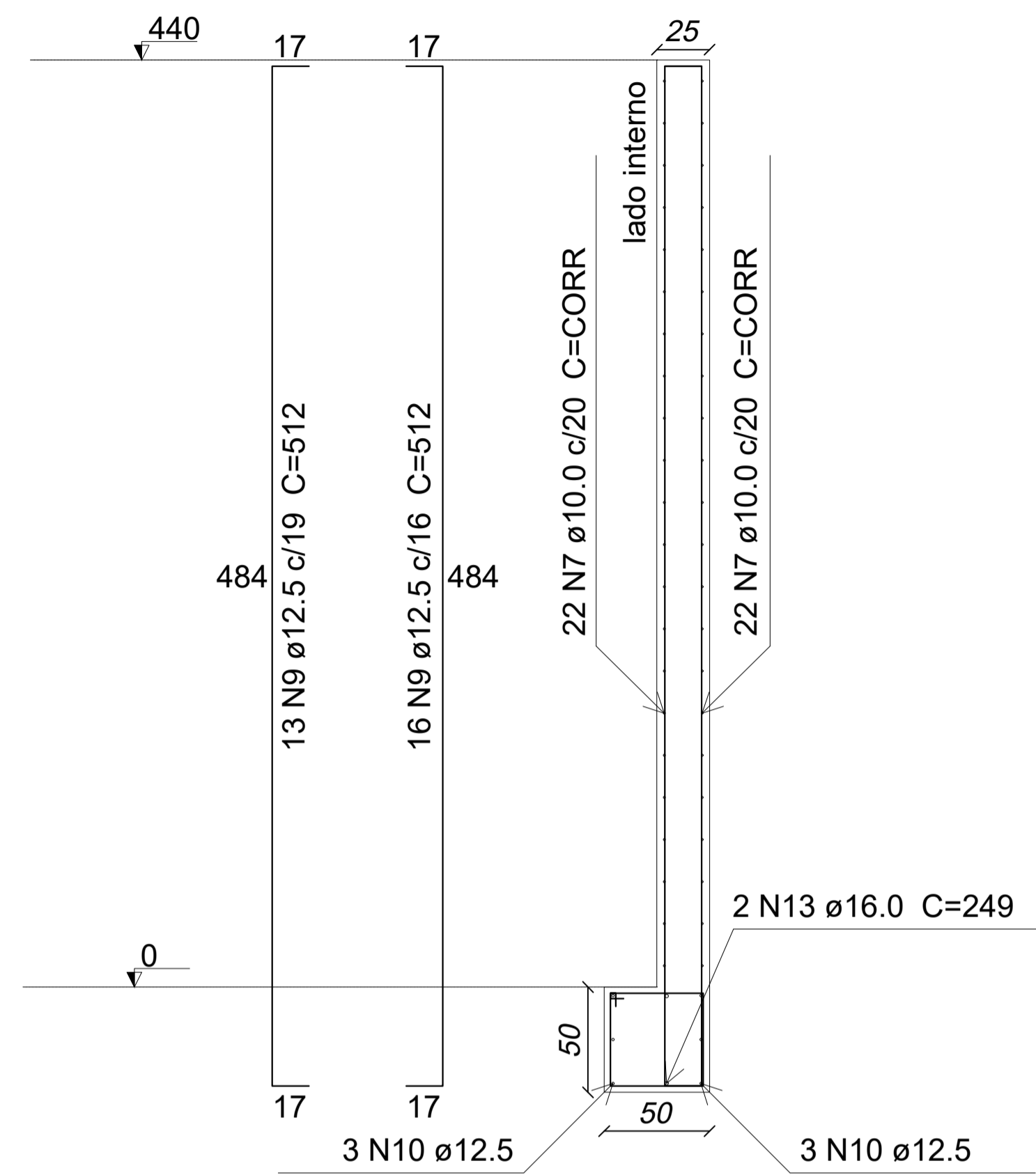
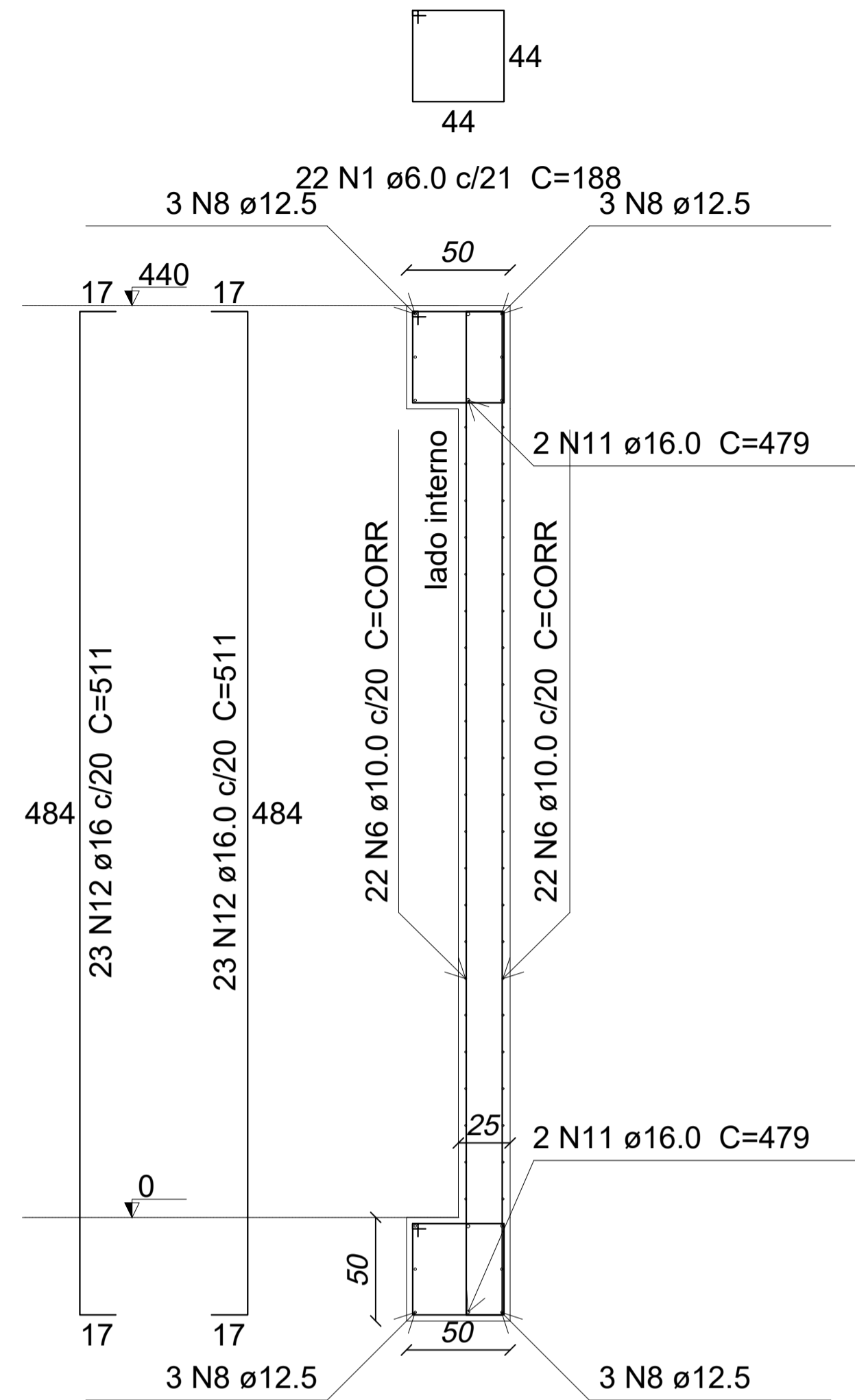


CABECEIRAS IN LOCO



PAR1

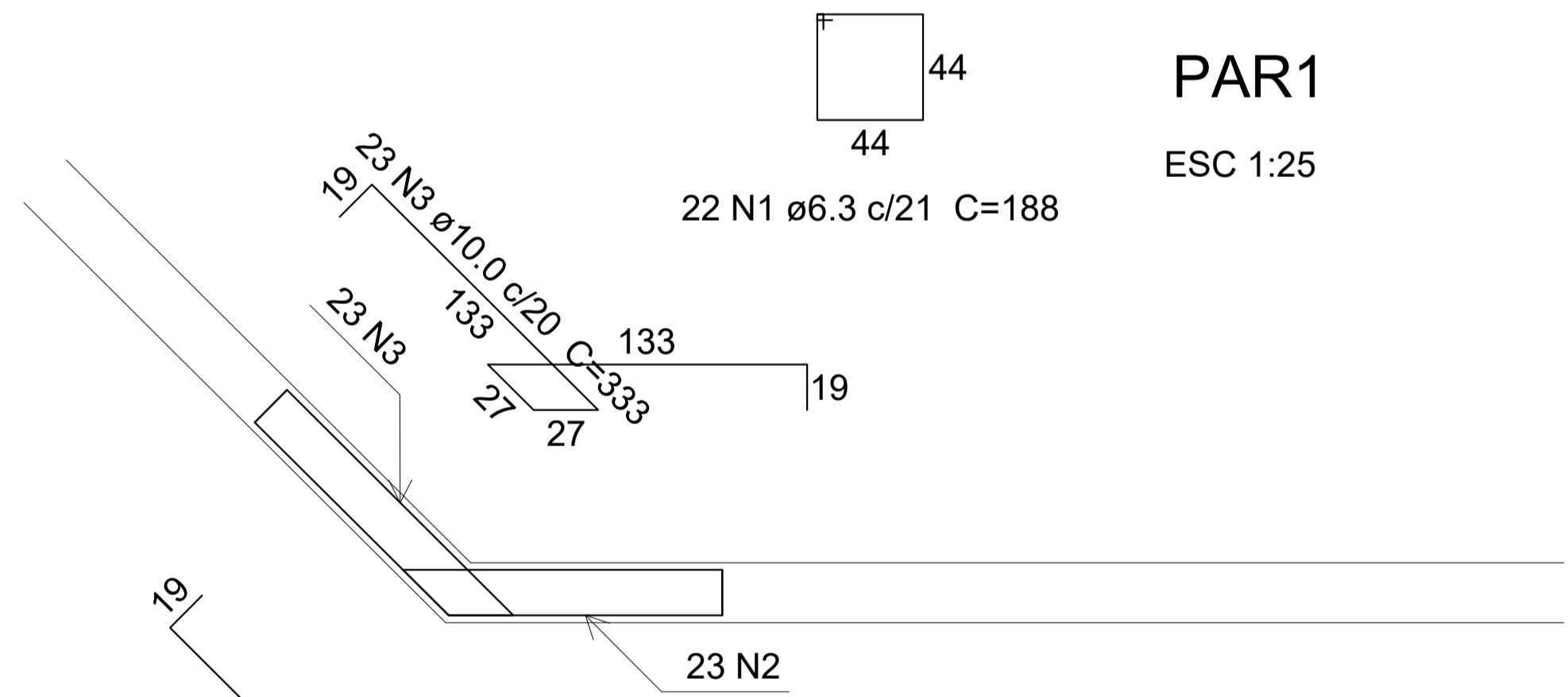
PAR3

PAR2

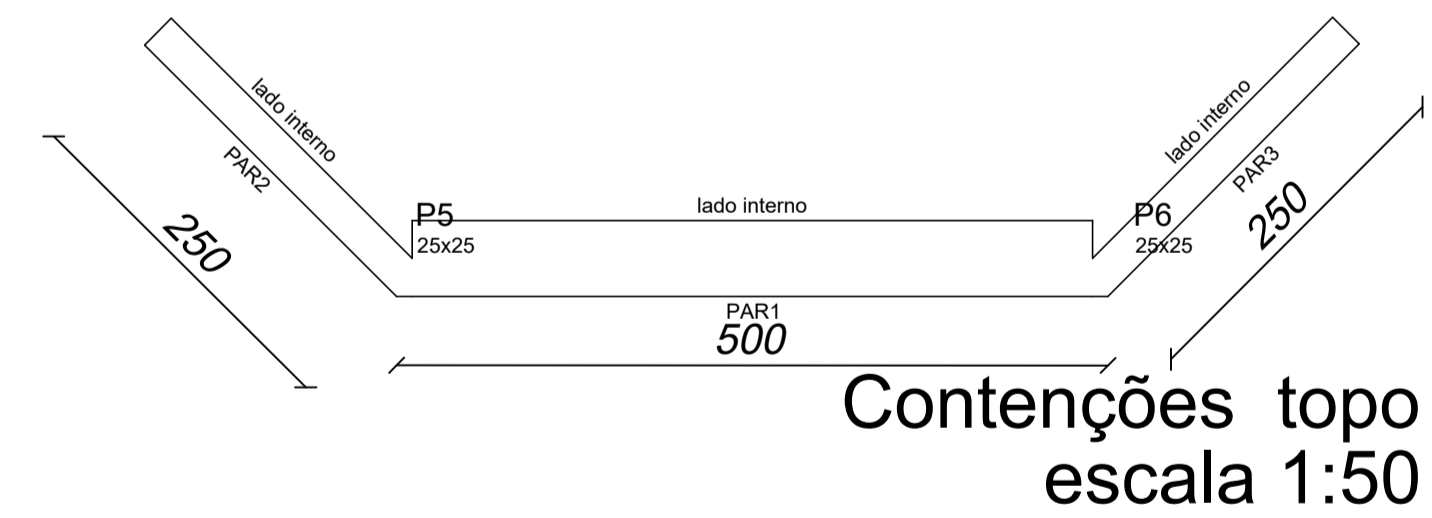
ESC 1:25

ESC 1:25

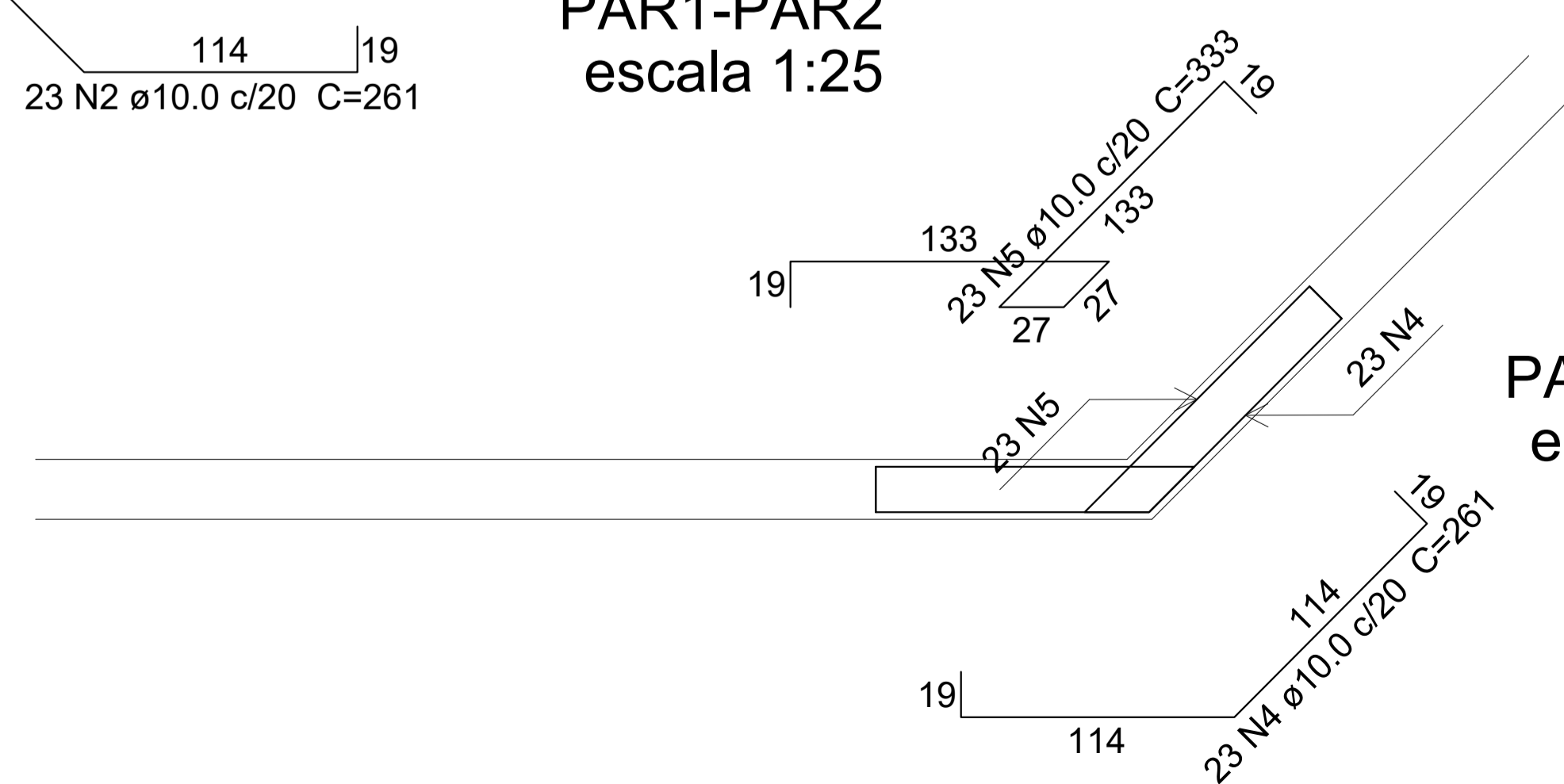
ESC 1:25



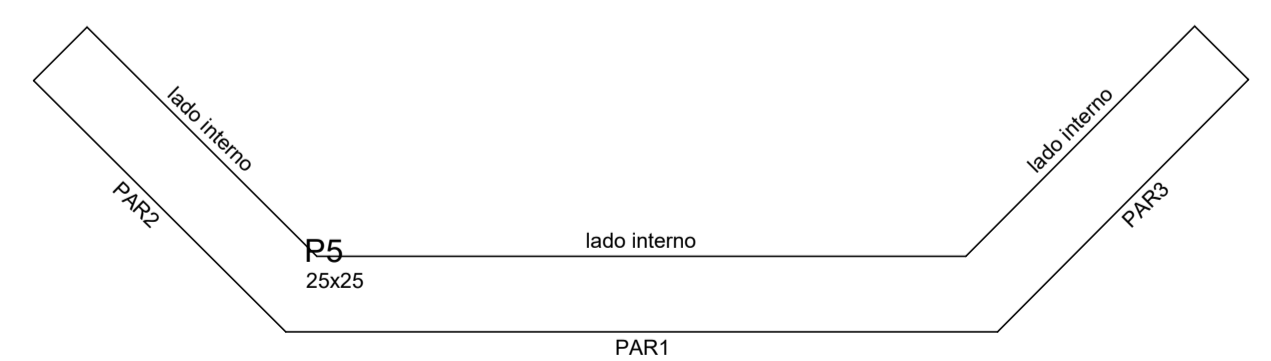
PAR1-PAR2
escala 1:25



Contenções topo
escala 1:50



PAR1-PAR3
escala 1:25



Contenções fundo
escala 1:50

TÍTULO:	PROJETO ESTRUTURAL (PONTE)
RESPONSÁVEL TÉCNICO:	MATHEUS KNORST SANTIN CREA-SC: 140977-3
CLIENTE:	PREFEITURA DE SALTINHO CNPJ: 01.612.844/0001-56
ASSUNTO:	CORTINAS (CABECEIRAS)
REVISOR:	ÁREA = 100,00 M²
DATA:	19/08/2020
ESCALA:	INDICADA